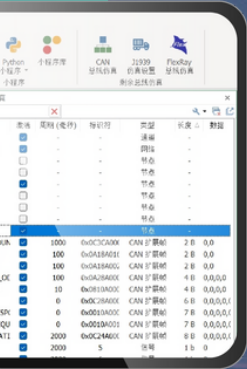
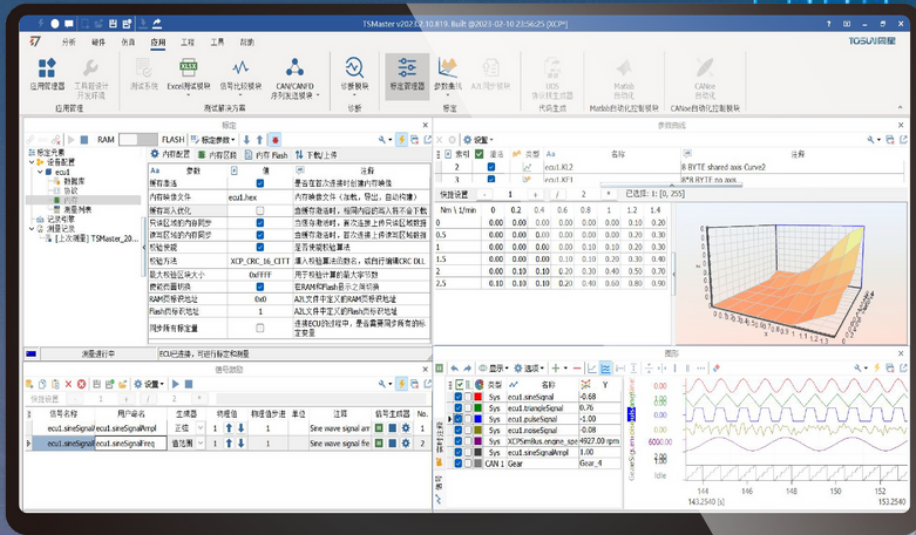


# TOSUN 同星



# TOSUN TECHNOLOGY

2023 - APR  
ENGINEER EVERYTHING

# ABOUT US



TOSUN Technology was founded by a group of individuals who share a common passion for automotive technology. The founders had been working together for over a decade before starting the company. They developed a deep understanding of the challenges and opportunities in the automotive industry, particularly in the field of automotive electronics. They conducted extensive research and collaborated on numerous projects, building a strong foundation of knowledge and expertise in the field.

## WHAT DO WE DO?

The goal has always been to develop innovative and cost-effective solutions for engineers around the world. We believe that our expertise in automotive electronic toolchain products can make a real difference in the industry by enabling engineers to work more efficiently and effectively.

## COMPANY

5000+ DOWNLOAD  
TSMaster

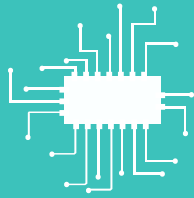
## EXPERIENCE

10 YEARS +  
AUTOMOTIVE  
INDUSTRY



# OUR SERVICE

We take pride in providing a diverse range of services including high-performing hardware, cost-effective software, and effective test solutions. Our dedication to delivering fast results, customised solutions, and driving innovation is what sets us apart from others in the industry.



## HARDWARE

LIN, CAN CAN FD,  
FlexRay, Ethernet  
SOMEIP/DOIP



## WORLDWIDE SUPPORT

We, along with our local partner, can offer prompt and efficient assistance to you.



## TSMASTER

Test analysis  
Simulation  
Calibration  
Diagnostic



## TEST SOLUTIONS

BMS/ADAS HiL Test  
FCT Test  
EOL Test  
Conformance Test

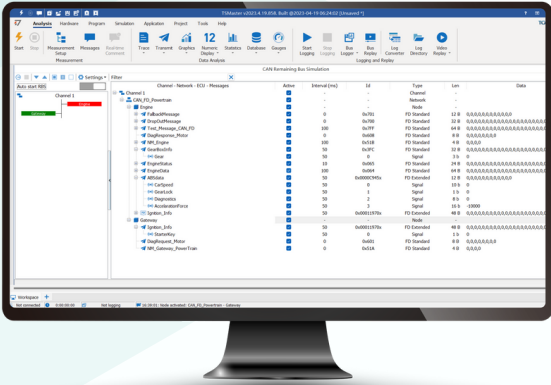


# TSMMASTER

## REAL-TIME SIMULATION

Support LIN, CAN, CANFD, FlexRay, Ethernet

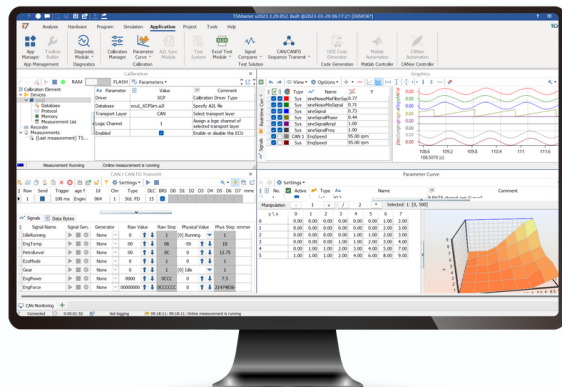
Enable you to simulate the signals, design a panel, monitoring the signals, loads the database files, and build your test systems. We support C script and python script. And many more features available for free.



## CALIBRATION

Support CAN CANFD - CCP/XCP

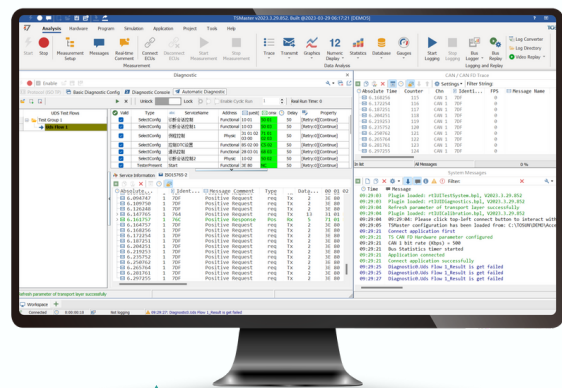
It is an indispensable process in the development of the vehicle and ECU, and plays a vital role in optimizing the performance of the vehicle and ECU.



## DIAGNOSTIC

Support LIN, CAN, CANFD

The diagnostic feature allow user to build their own request and response according to their needs. We now support CAN, CANFD, and LIN for UDS. User may create a flash bootloader test from TSMaster. Ethernet is coming soon!



DOWNLOAD IT FOR FREE NOW

# TOSUN HARDWARE



## LIN / CAN / CANFD

*Up to 12 channels*

- TC1001 - 1 CAN to USB
- TC1011 - 1 CAN FD to USB
- TC1012 - 1 CAN FD and 1 LIN to USB
- TC1013 - 2 CAN FD to USB
- TC1014 - 4 CAN FD to USB
- TC1016 - 4 CAN FD and 2 LIN to USB
- TC1018 - 12 CAN FD and 2 LIN to USB
- TC1026 - 1 CAN FD and 6 LIN to USB
- MP1013 - 2 CAN FD to mini PCIe adapter

## FLEXRAY / ETHERNET

*Up to 2 channel*

- TC1034 - 2 FlexRay and 2 CANFD
- TC1038 - 12 CAN FD, 12 LIN, and 2 FlexRay
- TE1001 - 100Base-T1 Media Converter
- TE1011 - 1000Base-T1 Media Converter
- TC1051 - 1 100Base-T1/1000Base-T1
- TC1054 - 2 CANFD and  
2 100Base-T1/1000Base-T1

## CHOOSE YOUR LICENSE

The license will be installed in hardware

To access more advanced features in TSMaster, an active license is needed on TOSUN's hardware. These licenses enable calibration, diagnostics, J1939 compatibility, encryption, and app publishing capabilities.

# THANK YOU

Thank you for taking the time to read through our catalog.

We hope it provided valuable information and insight into our products and services. Don't hesitate to reach out to us if you need further assistance or if you're ready to move forward with a collaboration. We look forward to the opportunity to work with you.

TC1001	1 CH CAN bus interface to USB 2.0 adapter.
TL1001	1 CH LIN bus interface to USB 2.0 adapter.
TC1011	1 CH CAN and CAN FD to USB 2.0 adapter.
TC1012	1 CANFD and 1 LIN to USB adapter
TC1012P	1 CANFD and 1 LIN to USB adapter with internal power supply for LIN master node.
TC1013	2 CH CAN FD to USB adapter
TC1014	4 CH CAN FD to USB adapter
TC1016	4 CH CAN and CAN FD , 2 CH LIN bus interface to USB adapter.
TC1018	12 CH CANFD, 2 CH LIN to USB adapter, one of the CAN FD channel can be used to sync.
TC1026	1 CH CANFD, 6 CH LIN to USB adapter
TLog1002	2 CH CAN FD, 2 CH LIN datalogger with 64G eMMC
TE1001	100Base-T1 Media Converter
TE1011	1000Base-T1 Media Converter
TC1051	1 CH 100Base-T1/1000Base-T1 to USB3.0 adapter
TC1054	2 CH CANFD and 2 CH 100Base-T1/1000Base-T1 to USB3.0 adapter
TC1034	2 CH CAN FD and 2 FlexRay to USB 2.0 adapter
TC1038	12 CH CAN FD, 12 CH LIN, and 2 FlexRay to USB adapter.
MPI013	2 CH CAN FD to mini PCIe adapter
TSCCP	CCP calibration license
TSXCP	XCP calibration license
TSCXCP	CCP/XCP calibration bundle
TSUDS	UDS license support ODX/CDD file import to TSMaster and automation process.
TSJ1939	The license of J1939 supports multi-frame message transmission, which refers to the data transmission of more than 8 bytes
TSENC	Encrypted publishing feature - Set password protection for your classified files or project.
TSAPP	App builder feature - Generate a standalone app based on your current project settings

**TOSUN 同星**

sales@tosunai.cn

info@tosunai.cn