



**TOSUN 同星**

## **TOSUN User Manual**

**Shanghai TOSUN Technology Ltd.**

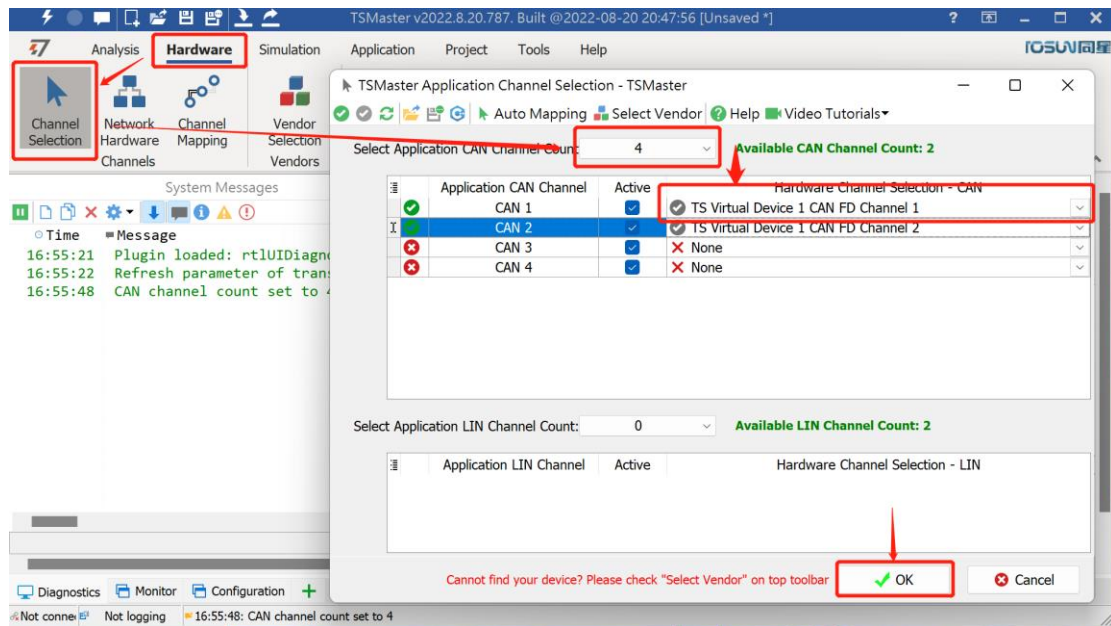
## Step1 – Install TSMaster

Download links - <https://bit.ly/3xaAxtS>

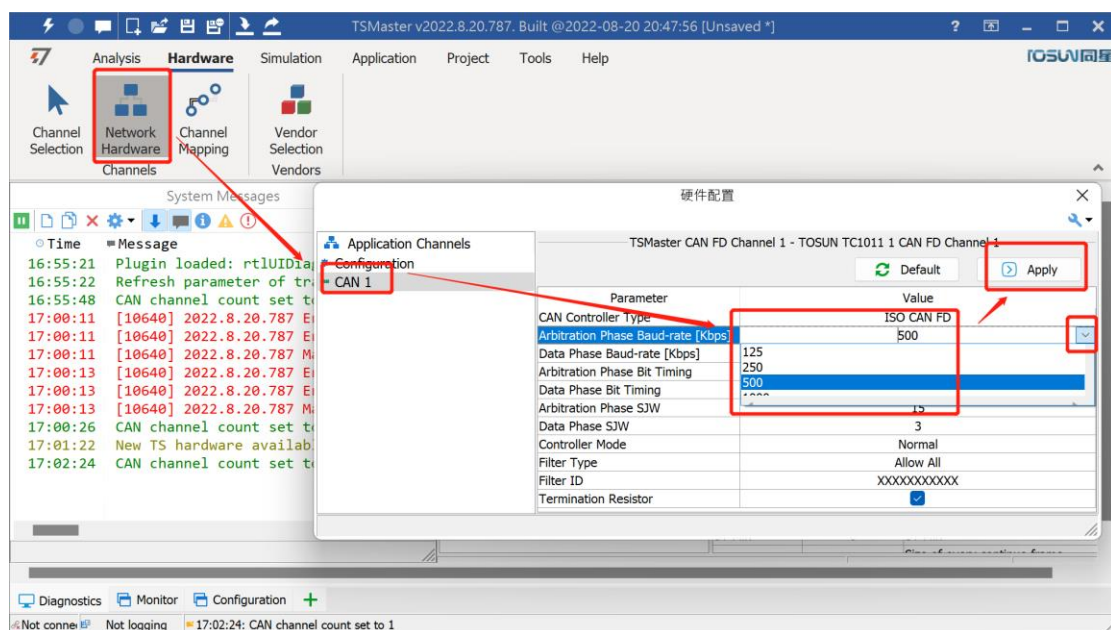
## Step2 – Connect hardware

TOSUN apply driver-free design

Simple connect and start testing!

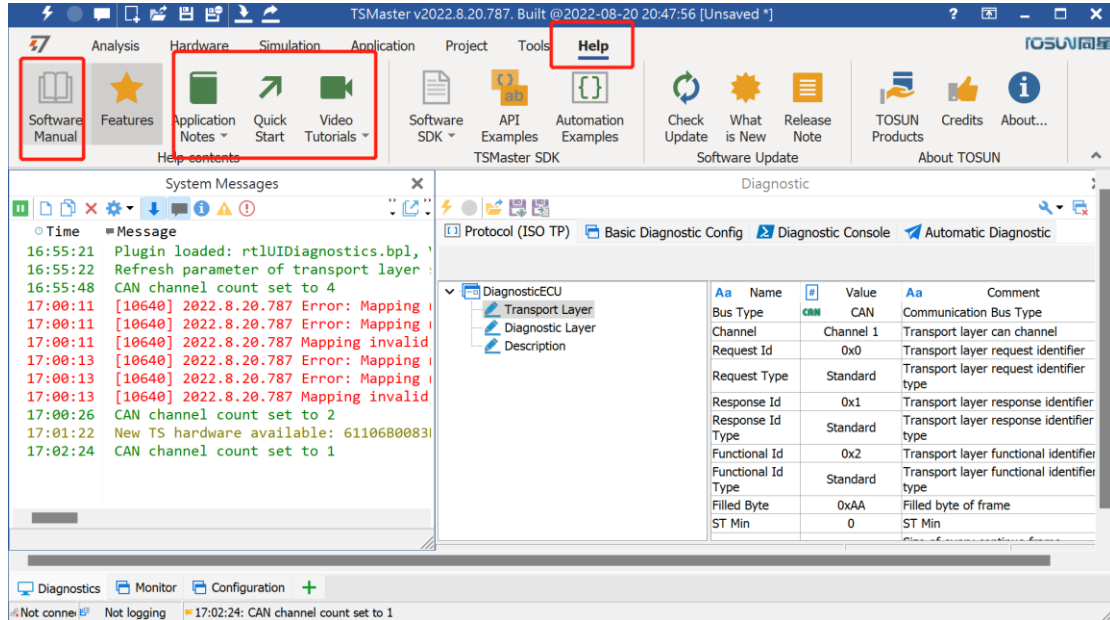


Configure the channel, set baud rate!

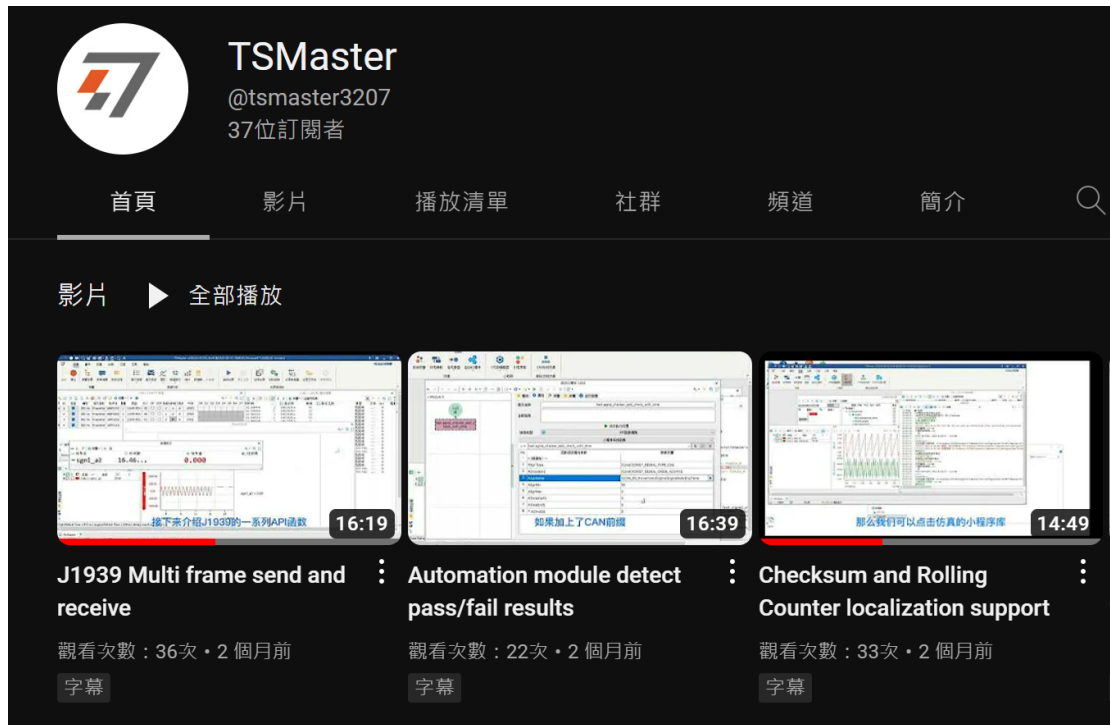


## Step3 – User manual and helps section

TSMaster – help section for user manual and tutorials.

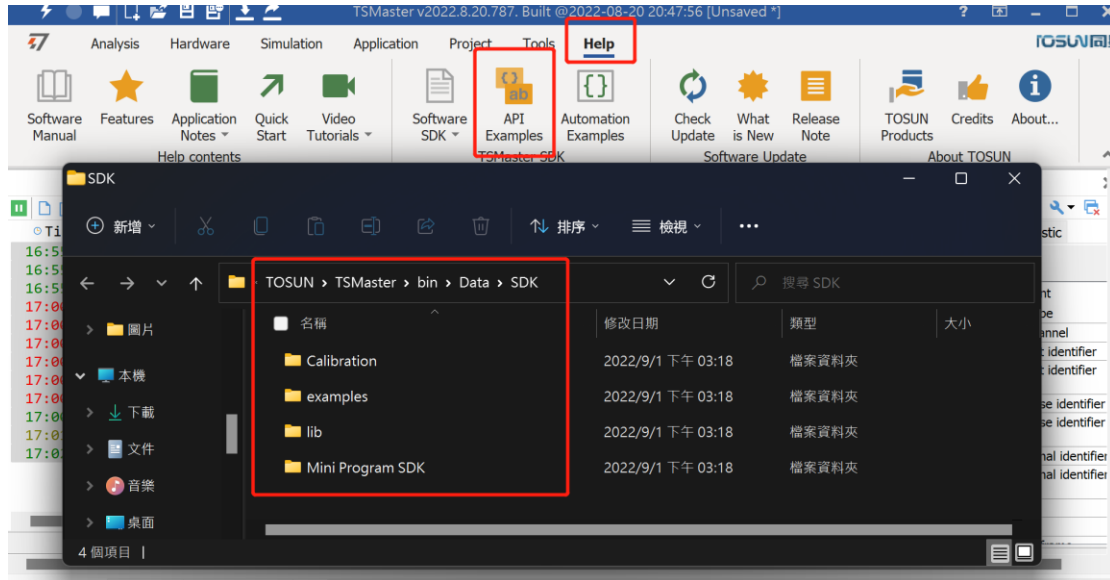


Support English subtitle on YouTube TSMaster Channel.



## Step4 – API user guide

Check the API example in help section.



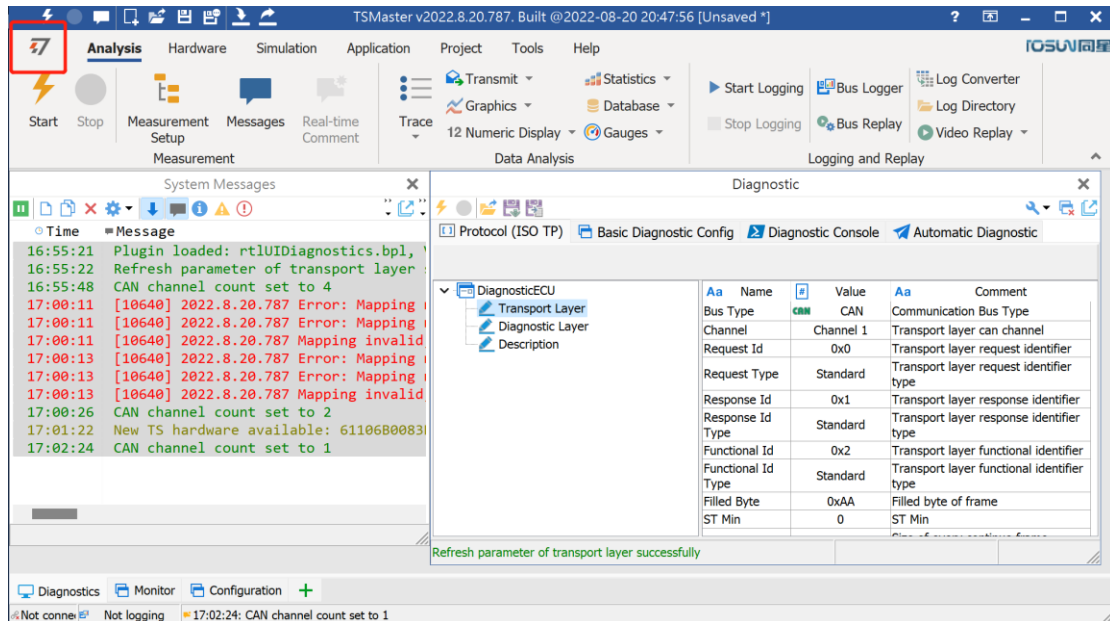
For more information, please check our user manual.

### TSMaster User Manual

TSMaster User Manual.....	1
Chapter 1 TSMaster User Interface.....	8
1.1 User Interface Introduction.....	8
1.1.1 Main Interface.....	8
1.1.2 Ribbon Functions .....	8
1.1.2.1 Analysis Tab.....	9
1.1.2.2 Hardware Tab .....	10
1.1.2.3 Project Tab .....	11
1.1.2.4 Tools Tab.....	13
1.1.3 Help Tab .....	14
1.1.4 Application Shortcuts.....	14
1.1.5 Univeral Drag and Drop.....	14

## Step5 – Demo project

Click the small TSMaster icon



Scroll down for sample projects, and select it



Contact: [sales@tosunai.cn](mailto:sales@tosunai.cn)

Tech Support: [support@tosunai.cn](mailto:support@tosunai.cn)